

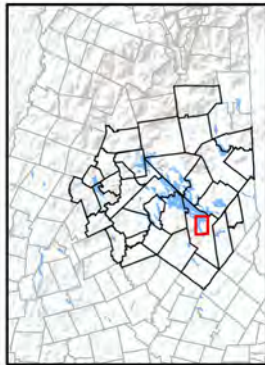
TRASK SWAMP PRESERVE

Conserved Property of the
Lakes Region Conservation Trust

Welcome to Trask Swamp and Fort Point Woods Preserve. This 183 acres of conserved woodland and wetland has been protected since its purchase in 1995 for research, wildlife protection and educational use through the generosity of supporters of the Trust. Feel free to enjoy hiking, observing wildlife, photography, snowshoeing, cross-country skiing on this protected property

The Trask Swamp Preserve is a botanically unique wetland adjacent to upland forest. There are expansive and diverse habitats in wetland transition areas and woods.

Small Whorled Pogonia growth has been spotted, among Chestnut sprouts, a Great Blue Heron rookery, Great Horned Owls, Red Tail Hawks and Wood Ducks.



Directions:

From Alton Traffic Circle:

- Follow NH-28 N for 4 miles.
- Turn left onto NH-28A N for .7 miles.
- Turn right onto Chestnut Cove Rd for .5 miles.
- Take a slight left toward Fort Point Rd. for .3 miles.
- Continue onto Fort Point Rd. for approximately .6 miles.
- The kiosk will be on your left.

From Wolfeboro:

- Head west on NH-28 S toward Oakwood Rd. for 3.8 miles.
- Turn right onto Chestnut Cove Rd. for 1.3 miles.
- Take a sharp right toward Fort Point Rd. for .3 miles.
- Continue onto Fort Point Rd. for approximately .6 miles.
- The kiosk will be on your left.

Lakes Region Conservation Trust

The Lakes Region Conservation Trust was founded in 1979 to conserve the natural heritage of New Hampshire's Lakes Region. Our conservation and stewardship work preserves community character, conserves critical wildlife habitat and diverse ecosystems, protects natural landmarks and scenic landscapes, and provides outdoor recreation opportunities for people of all ages.

Together with our dedicated community of supporters, we have conserved thousands of acres throughout the Lakes Region. These conserved lands encompass many of the special places that define this unique and spectacular part of New England, affording everyone abundant opportunities to explore and connect with the natural world and establishing a legacy of conservation for future generations.

Become a Member Today!



Lakes Region Conservation Trust
156 Dane Rd (Route 25B)
PO Box 766
Center Harbor, NH 03226
603-253-3301 • lrct@lrct.org • www.lrct.org

TRASK SWAMP TRAIL MAP

Lakes Region Conservation Trust



**Trask Swamp Preserve
Alton, New Hampshire**



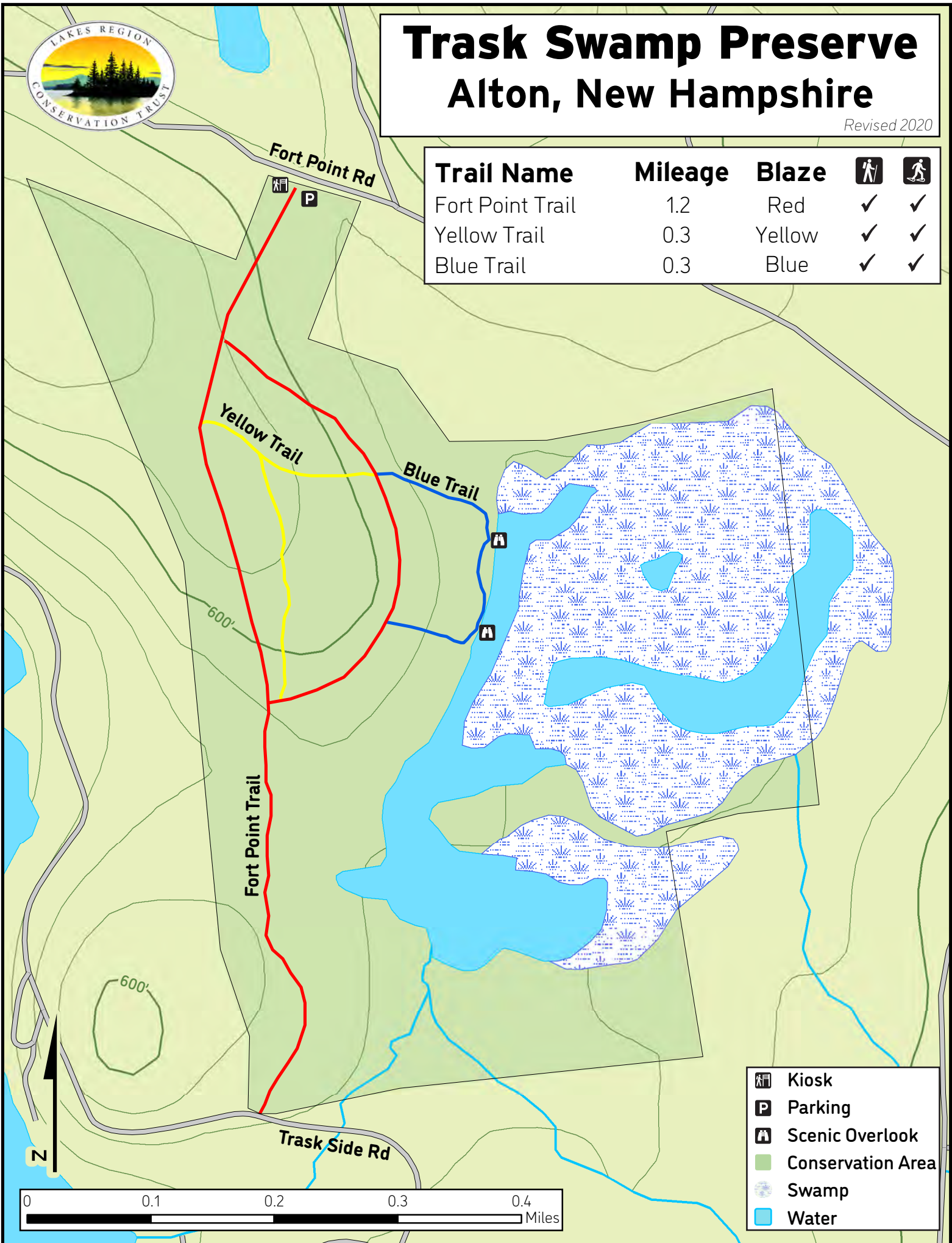
Trask Swamp Preserve

Alton, New Hampshire

Revised 2020



Trail Name	Mileage	Blaze		
Fort Point Trail	1.2	Red	✓	✓
Yellow Trail	0.3	Yellow	✓	✓
Blue Trail	0.3	Blue	✓	✓



	Kiosk
	Parking
	Scenic Overlook
	Conservation Area
	Swamp
	Water