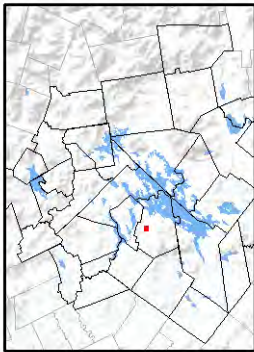


AVIS P. SMART WOODS

Conserved Property of the
Lakes Region Conservation Trust

Welcome to the Avis P. Smart Woods, a 32-acre forest protected by the Lakes Region Conservation Trust. The property was once farmland and includes a magnificent stand of sugar maples that were first tapped in the mid-1800s. Today it provides habitat for a wide range of wildlife and opportunities for respectful recreation and nature observation.

The protection of this property was made possible by the generosity of Avis and William Smart, who donated the land to LRCT in 2005 in order to preserve it for the benefit and enjoyment of generations to come. The property had been in Avis Smart's family for over 70 years. The commitment of families such as the Smarts to their town and to the Lakes Region makes a major contribution to preserving the natural and historic heritage of the Region.



Directions:

The Avis P. Smart Woods is located near Gilford Village, close to the intersection of Watson Rd. and Gunstock Hill Rd.

From the north, west, and south (Route 11):

- Follow Route 11 to the intersection with Route 11C near the Laconia Airport.
- Turn southeast onto Watson Rd. (across from Route 11C) toward Gilford Village.
- Follow Watson Road for approximately 1.0 mile to the Avis P. Smart Woods. (LRCT kiosk on right, before you reach Gunstock Hill Road).

From the east (Gilford):

- Follow Gunstock Hill Rd. to the intersection with Watson Rd. Turn onto Watson Road for less than ¼ mile to the Avis P. Smart Woods. (LRCT kiosk on left).

Lakes Region Conservation Trust

The Lakes Region Conservation Trust was founded in 1979 to conserve the natural heritage of New Hampshire's Lakes Region. Our conservation and stewardship work preserves community character, conserves critical wildlife habitat and diverse ecosystems, protects natural landmarks and scenic landscapes, and provides outdoor recreation opportunities for people of all ages.

Together with our dedicated community of supporters, we have conserved thousands of acres throughout the Lakes Region. These conserved lands encompass many of the special places that define this unique and spectacular part of New England, affording everyone abundant opportunities to explore and connect with the natural world and establishing a legacy of conservation for future generations.

Become a Member Today!



Lakes Region Conservation Trust
156 Dane Rd (Route 25B)
PO Box 766
Center Harbor, NH 03226
603-253-3301 • lrct@lrct.org • www.lrct.org

AVIS P. SMART WOODS TRAIL MAP

Lakes Region Conservation Trust







**AVIS P. SMART WOODS
Gilford, New Hampshire**

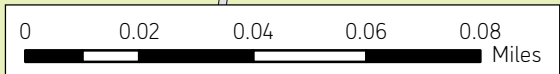
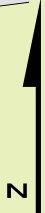
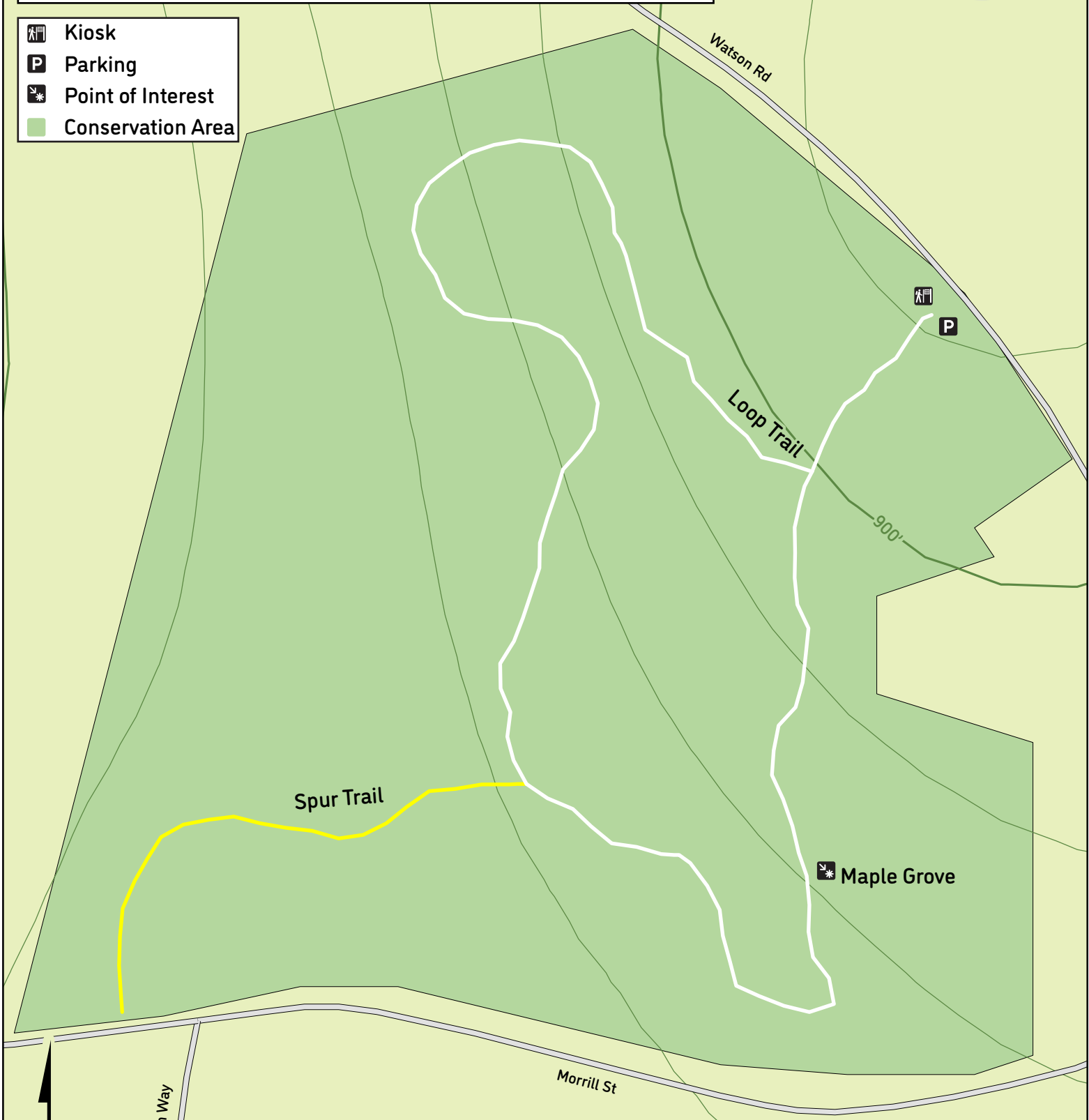




Avis P. Smart Woods Gilford, New Hampshire

Revised 2020



-  Kiosk
-  Parking
-  Point of Interest
-  Conservation Area



Trail Name	Mileage	Blaze		
Loop Trail	0.6	White	✓	✓
Spur Trail	0.2	Yellow	✓	✓