

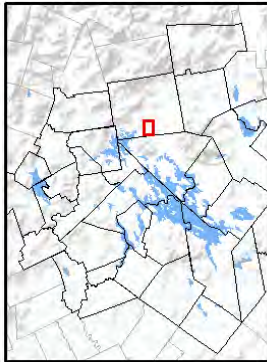
# RED HILL RIVER CONSERVATION AREA

Conserved Property of the  
Lakes Region Conservation Trust

Welcome to the Red Hill River Conservation Area, which not only provides a scenic woodland and wetland complex for passive public recreation, but also contributes significantly to the area's water quality and wildlife communities. The Red Hill River and its tributaries flow from and through areas, such as Red Hill Pond, Red Hill, and Garland Pond, where significant land has been conserved by the Town of Sandwich, LRCT, and The Nature Conservancy.

This area provides habitat for bear, bobcat, beaver, fox, moose, and many other animals and plants.

LRCT has constructed a trail named after the late Jocelyn Gutches, who lived nearby and worked on this conservation project prior to her passing in 2014. Jocelyn served as LRCT Trustee for many years and was devoted to conservation and to the well-being of her town.



#### Directions:

##### **From Route Center Sandwich and points north and east:**

- Follow Squam Lake Road southwest from Center Sandwich for approximately 1.0 mile to Great Rock Road, which is on the left.
- Bear left onto Great Rock Road and continue for another 1.0 mile.
- At the end of Great Rock Road, head left onto Range Road for approximately 0.3 miles.
- The trailhead parking area will be on the left.
- If you reach the intersection of School House Road and Sheridan Road without having found the parking area, you've gone too far.

##### **From Center Harbor and points south and west:**

- From the lights on Route 25 in Center Harbor, turn north onto Bean Road toward Center Sandwich.
- Follow Bean Road, which becomes Squam Lake Road at the Sandwich Town Line, for approximately 5.4 miles to Range Road, which is on the right.
- Turn right onto Range Road and continue for 1.5 miles.
- The trailhead parking area will be on the left approximately 0.3 miles after passing Great Rock Road on your left.
- If you reach the intersection of School House Road and Sheridan Road without having found the parking area, you've gone too far.

*Please respect private property of our neighbors. Thank you.*

# Lakes Region Conservation Trust

The Lakes Region Conservation Trust was founded in 1979 to conserve the natural heritage of New Hampshire's Lakes Region. Our conservation and stewardship work preserves community character, conserves critical wildlife habitat and diverse ecosystems, protects natural landmarks and scenic landscapes, and provides outdoor recreation opportunities for people of all ages.

Together with our dedicated community of supporters, we have conserved thousands of acres throughout the Lakes Region. These conserved lands encompass many of the special places that define this unique and spectacular part of New England, affording everyone abundant opportunities to explore and connect with the natural world and establishing a legacy of conservation for future generations.

***Become a Member Today!***



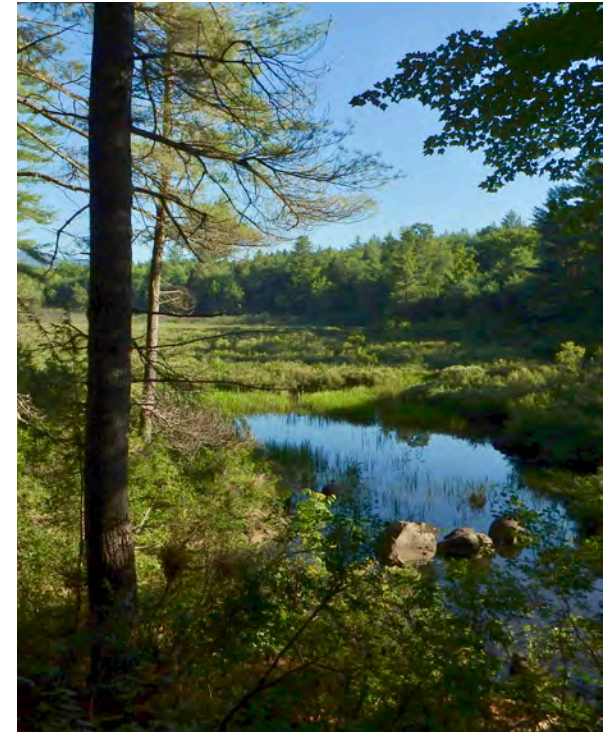
Lakes Region Conservation Trust  
156 Dane Rd (Route 25B)  
PO Box 766  
Center Harbor, NH 03226  
603-253-3301 • lrct@lrct.org • www.lrct.org

# RED HILL RIVER TRAIL MAP

## Lakes Region Conservation Trust

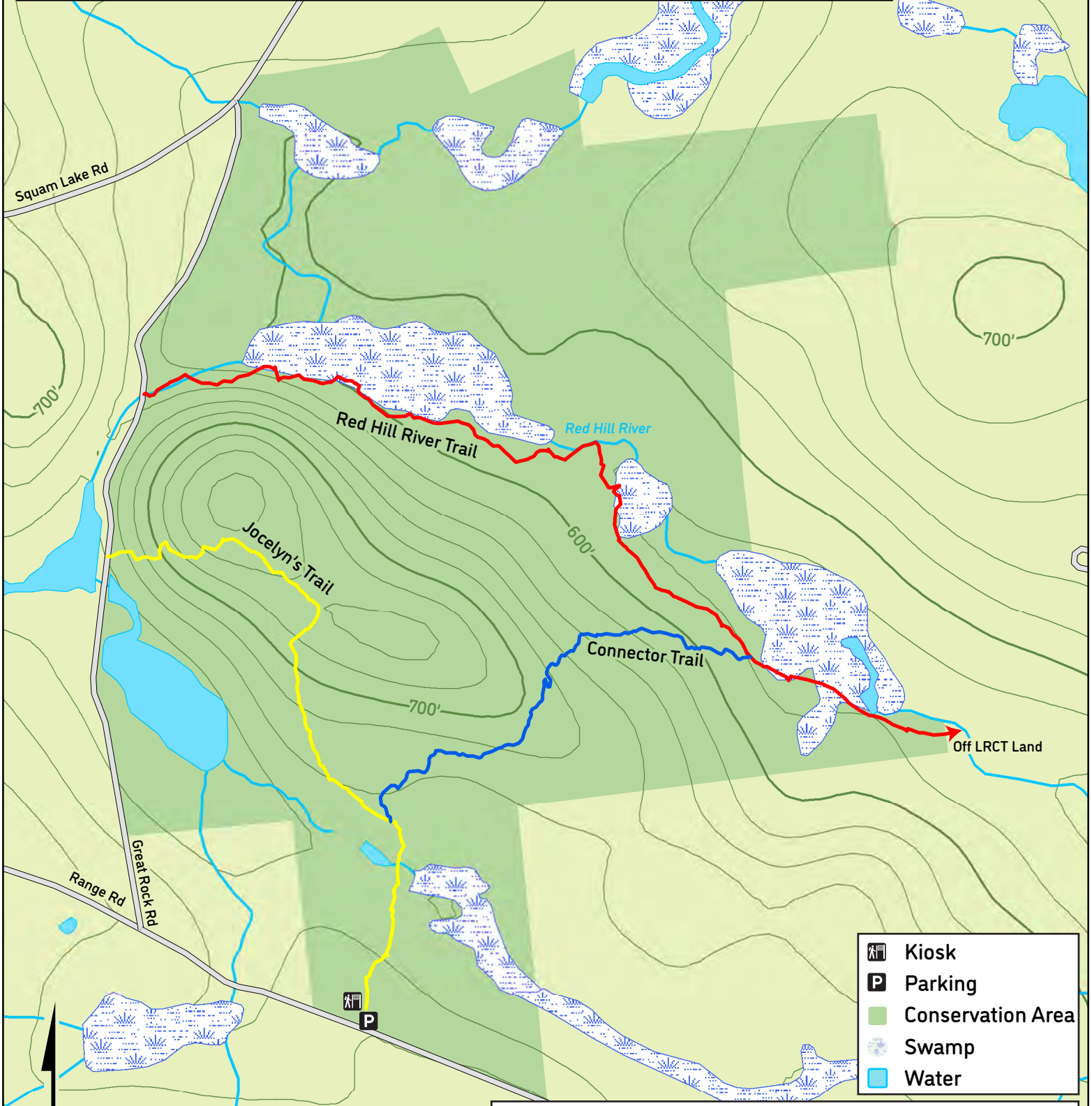


## RED HILL RIVER CONSERVATION AREA Sandwich, New Hampshire



# Red Hill River Conservation Area Sandwich, New Hampshire

Revised 2021



	Kiosk
	Parking
	Conservation Area
	Swamp
	Water

Trail Name	Mileage	Blaze		
Jocelyn's Trail	0.9	Yellow	✓	✓
Red Hill River Trail	1.2	Red	✓	✓
Connector Trail	0.6	Blue	✓	✓

