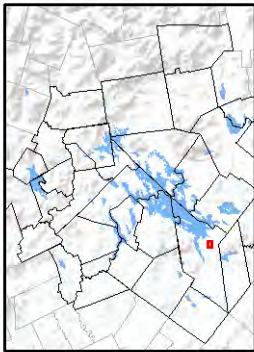


# COTTON HURD CONSERVATION AREA

Conserved Property of the  
Lakes Region Conservation Trust

Welcome to the Cotton-Hurd Conservation Area, a 135-acre property acquired by the Lakes Region Conservation Trust in 1999. Cotton-Hurd Woods Preserve consists of two parcels – one is a forested lot bordered by Route 28 and Chestnut Cove Road between Alton and Wolfeboro. The other is a smaller parcel on the east side of Route 28.

Home to a variety of upland species, including a mixture of hardwoods and softwoods, and wildlife including beavers. Hurd Brook runs through the property after combining with the Gilman Pond Brook on the north end of the property. Hurd Brook is stocked with brook trout by New Hampshire Fish and Game Department.



#### Directions:

- From Alton Bay take Rte. 28 heading towards Wolfeboro.
- Go 5.1 miles (you will bypass East Alton General Store on left at intersection of Rt. 28 and Rt. 28A.)
- Turn left on to Chestnut Cove Road.
- Go a short 0.1 mile to road side parking on left along a few large rocks w/access to an old woods road. A sign nearby says "Protected by LRCT."
- Go another 0.1 mile for off road parking on left for one or two cars next to the Hurd Brook culvert. A sign is there, "Protected by LRCT."

*Please respect the private property of our neighbors.*

*Thank you.*

# Lakes Region Conservation Trust

The Lakes Region Conservation Trust was founded in 1979 to conserve the natural heritage of New Hampshire's Lakes Region. Our conservation and stewardship work preserves community character, conserves critical wildlife habitat and diverse ecosystems, protects natural landmarks and scenic landscapes, and provides outdoor recreation opportunities for people of all ages.

Together with our dedicated community of supporters, we have conserved thousands of acres throughout the Lakes Region. These conserved lands encompass many of the special places that define this unique and spectacular part of New England, affording everyone abundant opportunities to explore and connect with the natural world and establishing a legacy of conservation for future generations.

***Become a Member Today!***



Lakes Region Conservation Trust  
156 Dane Rd (Route 25B)  
PO Box 766  
Center Harbor, NH 03226  
603-253-3301 • lrct@lrct.org • www.lrct.org

# COTTON HURD TRAIL MAP

## Lakes Region Conservation Trust



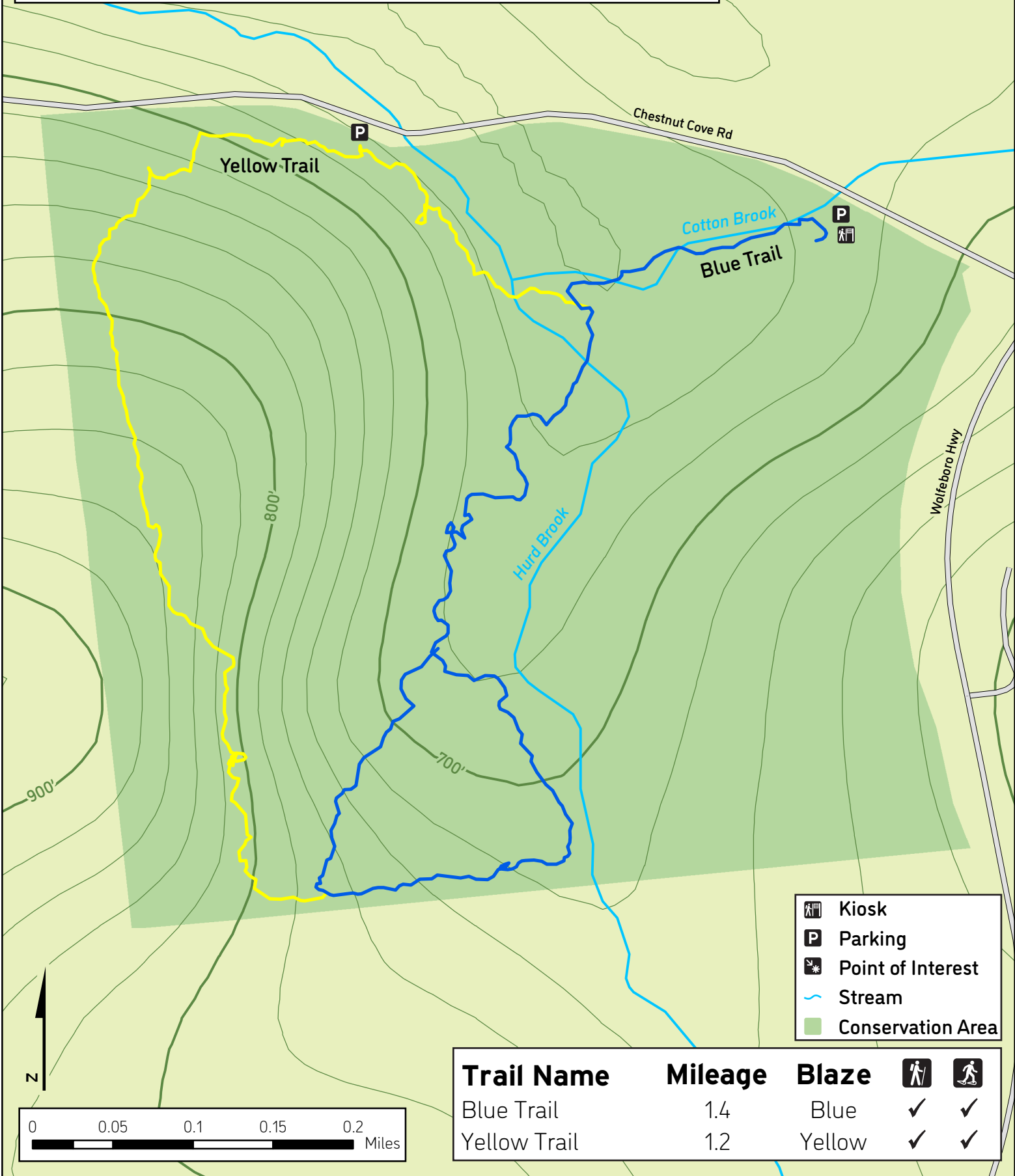
## COTTON HURD CONSERVATION AREA Alton, New Hampshire



# Cotton-Hurd Preserve

## Alton, New Hampshire

Revised 2020



Trail Name	Mileage	Blaze		
Blue Trail	1.4	Blue	✓	✓
Yellow Trail	1.2	Yellow	✓	✓