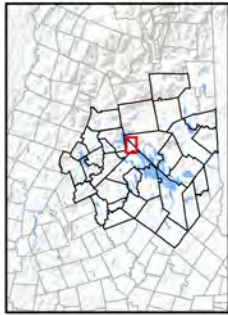


CENTER HARBOR WOODS & PINE HILL CONSERVATION AREAS

Welcome to Center Harbor Woods, a 224-acre scenic, natural, and recreational resource lying equidistant from Lake Winnepesaukee and Squam Lake in the heart of the Lakes Region. This land was conserved in 2010 through a unique collaboration of three conservation partners — the Lakes Region Conservation Trust (LRCT), which owns the land, and the Squam Lakes Conservation Society (SLCS) and the Town of Center Harbor, which hold the conservation easement.

Center Harbor Woods encompasses forests and wetlands providing significant wildlife habitat, where moose, bear, and deer are observed and where the four-toed salamander has been documented for the first time in central New Hampshire. The property contains a network of trails available for four-season use and enjoyment by all and provides a place where people of all ages can explore, appreciate, and learn from the natural world. Center Harbor Woods is contiguous to two other conservation tracts—LRCT's 121-acre Pine Hill Conservation Area in Moultonborough and NH Audubon's 47-acre Proctor Sanctuary in Center Harbor; together these properties provide almost 400 acres of conservation land.



Directions:

Center Harbor Neck Rd. Trailhead or LRCT Headquarters:

- From Route 25 in Center Harbor, take Plymouth St. or Main St. to the fountain at the Main St.-Route 25B intersection. Turn right on Route 25B and continue for ~0.9 miles. Turn right on C.H. Neck Rd. and continue for ~1.0 mile to the trailhead on the right. LRCT Headquarters is on Route 25B, on the right halfway up the hill from the fountain.
- From the junction of US Route 3 and NH Route 25B between Meredith and Holderness, take Route 25B east for ~2.2 miles. Turn left on CH Neck Rd. and continue for ~1.0 mile to the trailhead on the right. LRCT Headquarters is on Route 25B, on the left ~0.3 miles beyond C.H. Neck Rd.

High Haith Rd. Trailhead:

- From Route 25 in Center Harbor, take Bean Rd. north toward Center Sandwich for ~1.3 miles. Turn left on High Haith Rd. and continue for ~0.5 miles to the trailhead on the left.

Please respect the private property of our neighbors. Thank you.

Lakes Region Conservation Trust

The Lakes Region Conservation Trust was founded in 1979 to conserve the natural heritage of New Hampshire's Lakes Region. Our conservation and stewardship work preserves community character, conserves critical wildlife habitat and diverse ecosystems, protects natural landmarks and scenic landscapes, and provides outdoor recreation opportunities for people of all ages.

Together with our dedicated community of supporters, we have conserved thousands of acres throughout the Lakes Region. These conserved lands encompass many of the special places that define this unique and spectacular part of New England, affording everyone abundant opportunities to explore and connect with the natural world and establishing a legacy of conservation for future generations.

Become a Member Today!



Lakes Region Conservation Trust
156 Dane Rd (Route 25B)
PO Box 766
Center Harbor, NH 03226

603-253-3301 • lrct@lrct.org • www.lrct.org

CENTER HARBOR WOODS & PINE HILL TRAIL MAP

Center Harbor & Moultonborough, New Hampshire








LAND CONSERVED BY:

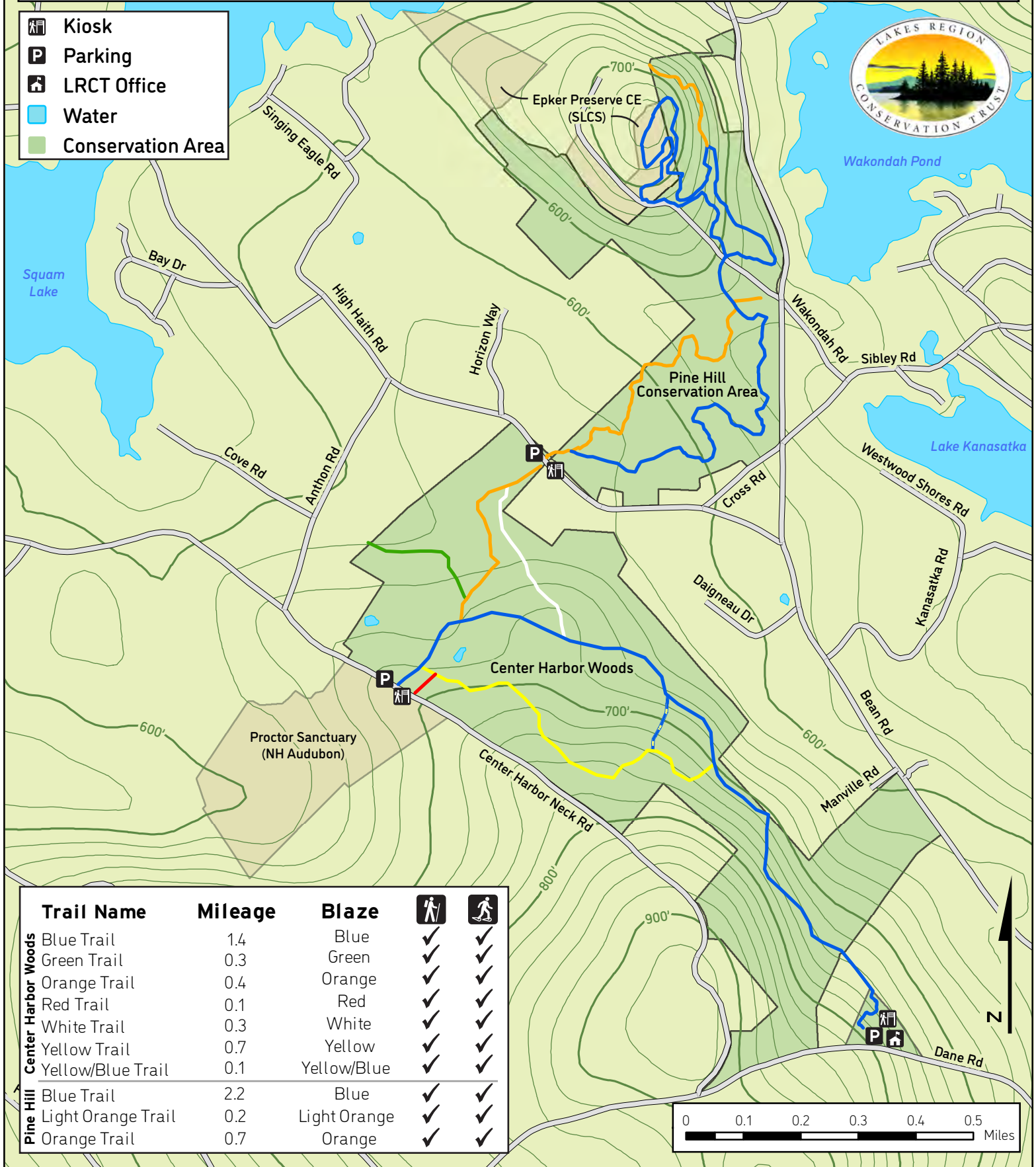
**LAKES REGION
CONSERVATION TRUST,
SQUAM LAKES
CONSERVATION SOCIETY,
&
TOWN OF CENTER HARBOR**





Center Harbor Woods & Pine Hill Conservation Areas

Center Harbor & Moultonborough, New Hampshire

-  Kiosk
-  Parking
-  LRCT Office
-  Water
-  Conservation Area



	Trail Name	Mileage	Blaze		
Center Harbor Woods	Blue Trail	1.4	Blue	✓	✓
	Green Trail	0.3	Green	✓	✓
	Orange Trail	0.4	Orange	✓	✓
	Red Trail	0.1	Red	✓	✓
	White Trail	0.3	White	✓	✓
	Yellow Trail	0.7	Yellow	✓	✓
	Yellow/Blue Trail	0.1	Yellow/Blue	✓	✓
Pine Hill	Blue Trail	2.2	Blue	✓	✓
	Light Orange Trail	0.2	Light Orange	✓	✓
	Orange Trail	0.7	Orange	✓	✓

